



SQUELCH TALES

OFFICIAL PUBLICATION OF SANDRA, INC.
Volume VIII Number 5 MAY 1980

IF Y'GOTTA "BREAK" ...
...RAISE YOUR HAND!
USE TWO FINGERS IF
IT'S URGENT!



IN THIS ISSUE.....

NEW IDENTIFICATION BADGES Inside Cover

ORGANIZATIONAL CHART Centerfold

OPERATIONAL GUIDELINES Inside Back Cover

PROPERTY INVENTORY Page Three

HF/SSB 5 BAND TRANSCEIVER

THE SS-105

- Wt: 3 kg (6.6 lbs)
- Dim: 17.8W x 12.4H x 27.2cm W
(7 x 4.9 x 10.7 inches)
- Incl. sep. xcvr. input and output connex.
- Pwr. output: Model SS-105S 10 watts
Model SS-105D 100 watts
- Covers the 80M, 40M, 20M, 15M and 10M bands
- Acc. avail. incl. Noise Blanker, 500Hz CW filter,
FM, RX and TX modules. Clip-on rechargeable
battery pack.

Model SS-105S
\$499⁹⁵

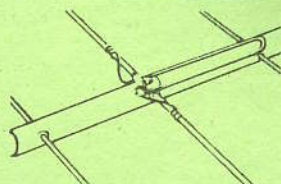
Model SS-105D
\$599⁹⁵



EXCLUSIVE FROM M & M!

NMT-11 144 & 220 YAGIS

- Handles legal power
 - Lightweight at 4 kg
 - 31 degree bandwidth
 - High efficiency performance
 - Easily arrayed for increased gain
 - Low VSWR, under 1.21:1 at resonance
 - Parasitic elements, 144/120: "1" al rod
 - DE, 144/220: "1" brass .020 wall, 7/32" insert
- NMT-11/144 or 146 \$59.95
NMT-11/220 or 223 \$54.95



Prices FOB San Diego.

M&M RF DISTRIBUTORS
P.O. Box 82183, San Diego, CA 92138

CALL
(714) 299-9741

ACTUAL SIZE



Ever come away from an Amateur Radio meeting with a severe case of eyestrain and still not sure who it was you had been talking to? Be kind to others - wear one! See inside back cover for particulars.

Contrary Thinking



When everyone thinks alike
it is likely everyone is wrong.

This space had been reserved for two good letters from a couple of members who are questioning the ideal of having repeaters that cover such a wide area. Simply, they ask, "Why is it necessary to have "hand-held" communication so far from the local need?"

Why, indeed? Do you have a compelling reason? Tell us about it.

Certainly "hand-held" transceivers are a boon to our ease of communication and no such device is going to get you to the San Fernando Valley without some help. The members of SANDRA are providing quite a bit of help to the hams both here and there.

We've recently experienced some less-than-pleasant results of having a repeater which could hear and talk to almost all of Southern California. It sure is nice to talk to Los Angeles any time you want but is that the price you members are willing to pay?

Surely the postman will have the two letters here in time for the next month's column and, maybe, you'll feel strongly enough about this concern to send in some comments of your own.

These pages are here for just such a reason and, in many instances, a much better place for the members to voice their contrary thinking on common problems. When is the last time you personally won your point over the radio? If you were able to carefully consider all of the pertinent information and then present a calm and cogent position -- congratulations! Most of us get a bit temperamental and carried away with our own rhetoric - later wishing that most of what we said, we hadn't.

Right now the new Board is in the process of making a comparative analysis on the options which have arisen out of the relocation of the former Mt. Otay machines. They are compiling a matrix of evaluations of which the "wide area" concept is just one. The object is to make the most of each of the options available.

When they finally agree upon a completed analysis you can be assured it will be a well weighted and inclusive action.

What do you think about the "wide area" coverage? What considerations do you feel are necessary to such a decision?

Write your own letter to the Editor!

Heathkit®



Announcing... the Heathkit® VF-7401 2-meter FM Digital Scanning Transceiver

Hi! I'M CRAIG COOK
- THE NEW MANAGER.
COME IN AND I'LL
GIVE YOU TWENTY-FIVE
DOLLARS OFF ON
THE VF-7401.



THE SANDRA AUTOPATCH

THE SANDRA 147.885/147.285 mhz REPEATER IS AN OPEN REPEATER OPERATED FOR THE USE OF ALL AMATEURS. AS AN ADDED FEATURE, AN AUTOPATCH CAPABILITY IS INSTALLED FOR THE USE OF MEMBERS OF SANDRA, INC.

NO FEE IS CHARGED FOR THE USE OF THE AUTOPATCH. THE DUES CHARGED FOR MEMBERSHIP IN SANDRA, GO TOWARDS THE PURCHASE, MAINTENANCE AND OPERATION OF ALL REPEATERS OWNED AND OPERATED BY SANDRA, INC. ADDITIONALLY, MEMBERSHIP DUES DEFRAY THE COST OF RUNNING THE CORPORATION IN SUCH AREAS AS THE PUBLICATION OF OUR MONTHLY NEWS BULLETIN, THE SENDING AND RECEIVING OF CORRESPONDENCE, THE PRINTING OF ROSTERS AND MEMBERSHIP APPLICATIONS, THE EXPANSION OF REPEATER SITES, DONATIONS, ETC. (FCC RULES & REGS, PART 97.112 APPLIES)

THE RESTRICTED DISSEMINATION OF THE AUTOPATCH ACCESS CODE IS UTILIZED AS A PROTECTION MEASURE FOR THE TRUSTEE'S LICENSE. THE TRUSTEE IS RESPONSIBLE FOR THE TRAFFIC ORIGINATING THROUGH THE REPEATER. BY LIMITING THE ACCESS CODE TO ONLY SANDRA MEMBERS, HE IS PROVIDED THE NECESSARY CONTROL OVER WHO UTILIZES THE AUTOPATCH FEATURE. THIS IS ACCOMPLISHED BY; 1) MEMBERSHIP IN SANDRA ENSURES THAT THE INDIVIDUAL IS A LICENSED AMATEUR RADIO OPERATOR, AND, 2) SINCE ALL MEMBERS AGREE TO ABIDE BY THE RULES OF THE ORGANIZATION, IF A PERSON REFUSES TO OPERATE THE AUTOPATCH PROPERLY, TERMINATION OF MEMBERSHIP COULD RESULT THUS REVOKING THAT PERSONS CAPABILITY TO USE THE AUTOPATCH. (FCC RULES & REGS, PART 97.78,85,86,88, 114,115,116,119,121,123,125 APPLY)

See also SQUELCH TALES January 1979 p. 5,6,7,8 and 9 Ed.

GOT ANY "SPARE" GEAR AROUND?

IF IT BELONGS TO SANDRA, INC
NOTIFY BOARD MEMBERS
W6THR, K6RYA OR W6GFV
THAT IT HAS BEEN STAYING
AT YOUR HOUSE.

see Board Minutes 1 May 80



JUN'S

COMING
SOON

YAESU 707

\$ 810.

YAESU 720RU ⁴⁴⁰/₄₅₀ FM

\$ 499.

CPU 2500

\$ 399.

AZDEN Pcs 2000

299.

RUBBER DUCK

12

IN
STOCK

Special FT 207 HANDIE
TALKIE

359

WE TAKE TRADES *

VISA CARDS SLIGHTLY EXTRA

7352 UNIVERSITY AVE.

La Mesa California 92041

463-1886

MINUTES - MEMBERSHIP MEETING

17 April 1980

- Sale/Swap table opened at 1900.
- Gene, WD6EXN, called meeting to order at 1930. 66 in attendance.
- Minutes of last meeting approved.
- Treasurer's report showed balance on hand of \$2525.51.
- Membership Chairman reports about 40 new memberships were responded to with the wrong Autopatch Code. The numbers were correct but the sequence may have been wrong. The smaller number comes first.
- Bill, W6THR, gave an update on the relocation plan promulgated in last month's Squelch Tales. Essentially, the 04/64 repeater is operating from the private site atop Mt. Helix, as per plan. The 220 and 450 machines are currently off-the-air. The 2 meter solid state repeater is undergoing some modifications, the most significant being the installation of the beeper-timer. Negotiations with SDG&E and NASA are progressing. Indications are positive. No new developments regarding our application with the California Division of Forestry for a LYONS PEAK repeater site.
- Harlow, WA6LZG, advised that some "unsolicited" money has been coming in from members that is ear marked to be used for defraying the cost of our new repeater vault on OTAY. As a result, an OTAY BUILDING FUND has been established. Currently, a little over \$100.00 is in the fund. Anyone desiring to contribute to the OTAY BUILDING FUND can do so by sending a check to the treasurer via the SANDRA P.O. Box. The money will be held separate from the general treasury and will be utilized only towards the construction of our new building.
- The program for the evening was entitled "INTERFERENCE" and was conducted by Howard, K6RYA. It was given in two parts. First, a discussion of existing interference on our repeaters, a review of the "Accepted Procedures" hand-out, and a discussion of methods for combating interference. The second half was a slide show on the development and up-to-date techniques used in VHF direction finding. Note: If anyone desires a copy of the "Accepted Procedures" hand-out, drop a note to the Secretary via the SANDRA P.O. Box or, supplies will be available at all meetings and the SANDRA table at the Swap meets.
- A motion was made by Sybil, W6GIC (Seconded by Gill, W6QR), nominating Wayne, W6PDA, to head up the OTAY building group. Following discussion, the motion was defeated.
- The meeting was adjourned at 2145.

Lucy
W6GIC SFS

NEW OWNERS NEEDED!

Polly Leonard still has Phil's (Silent Key K6MTN) radio desk for sale. It is wired and has many outlets.
Call her at 282-4949.

Dave WB6DSP would like to get a number of toys out of his "Sand Pile": 478-5391

CAPEHART 39A/URR General Coverage Receiver with the original manual. \$275.00 - or offer.

PALOMAR Six and Ten Meter Transceiver which has been used only a few hours. \$395.00

INFOTEC RTTY-12 with TRS-80 Monitor \$500.00

Howard N6BXM 297-1195 wants \$400.00 for a KENWOOD TS-700A equipped with a Lunar Pre-amplifier and a Kenwood Touchtone Microphone.

Lenny WB6SIP has a number of items in "top condition"

ICOM IC230 with splits.....\$165.00

STANDARD 146A Hand Held with nicads and xtals installed.....\$150.00

Charger.....20.00

Leather case.....10.00

(Bonus antenna and adapters is you buy all)

ATRONICS Code Reader with 3/4" Display \$135.00

TEN TEC Argonaut Transceiver.....\$175.00

TEN TEC Linear.....75.00

TEN TEC Crystal Calibrator.....10.00

ELECTRO Voice Mike and stand.....15.00

Call Lenny at 582-9182

Pat WB6VSL is looking for 3393.6KHz and 3396.4 KHz crystals for his Heatkit 40L. Phone 448-0874

Bill WA6DWR would like to buy your spare 2Meter Base Transceiver. He'll also renew your membership. 460-4754

THE GIANT

AZDEN[®]

COMPANY

REVOLUTIONIZES THE STATE OF THE ART

AWE AND AZDEN INTRODUCE THE BRILLIANT NEW PCS-2000

MICROCOMPUTER
CONTROLLEDSUPERIOR COMMERCIAL GRADE
2 METER FM TRANSCEIVER

NOT \$550.00

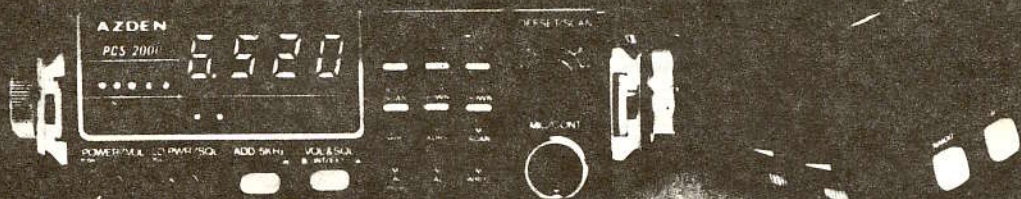
SPRING
SALE\$299⁰⁰

REG. \$369.00

NOT \$550.00

SPRING
SALE\$299⁰⁰

REG. \$369.00



COMPARE THESE FEATURES WITH ANY UNIT AT ANY PRICE

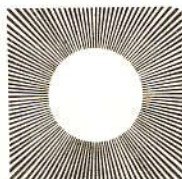
VISA

- **FREQUENCY RANGE:** Receive and transmit: 144.00 to 147.995 MHz. 148.00 to 149.995 MHz. **3 METER CAR and MULTIPLE OFFSET BUILT IN.**
- **REPEATER CODES PLURAL SYNTHESIZED.**
- **SIZE: UNBELIEVABLE! ONLY 6 3/4" x 2 3/8" x 9 3/4". COMPARE!**
- **MICROCOMPUTER CONTROLLED:** All scanning and frequency-control functions are performed by microcomputer.
- **DETACHABLE HEAD:** The control head may be separated from the radio for use in limited spaces and for security purposes.
- **SIX-CHANNEL MEMORY:** Each memory is re-programmable. Memory is retained even when the unit is turned off.
- **MEMORY SCAN:** The six channels may be scanned in either the "busy" or "vacant" modes for quick, easy location of an occupied or unoccupied frequency. **AUTO RESUME. COMPARE!**
- **FULL-BAND SCAN:** All channels may be scanned in either "busy" or "vacant" mode. This is especially useful for locating repeater frequencies in an unfamiliar area. **AUTO RESUME. COMPARE!**
- **INSTANT MEMORY-1 RECALL:** By pressing a button on the microphone or front panel, memory channel 1 may be recalled for immediate use.
- **MIC-CONTROLLED VOLUME AND SQUELCH:** Volume and squelch can be adjusted from the microphone for convenience in mobile operation.
- **ACCESSORY OFFSET:** Provides three additional offset values: +0.4 MHz, +1 MHz and +1.8 MHz. Other offsets may also be obtained.
- **25 WATTS OUTPUT:** Also 5 watts low power for short-distance communication.

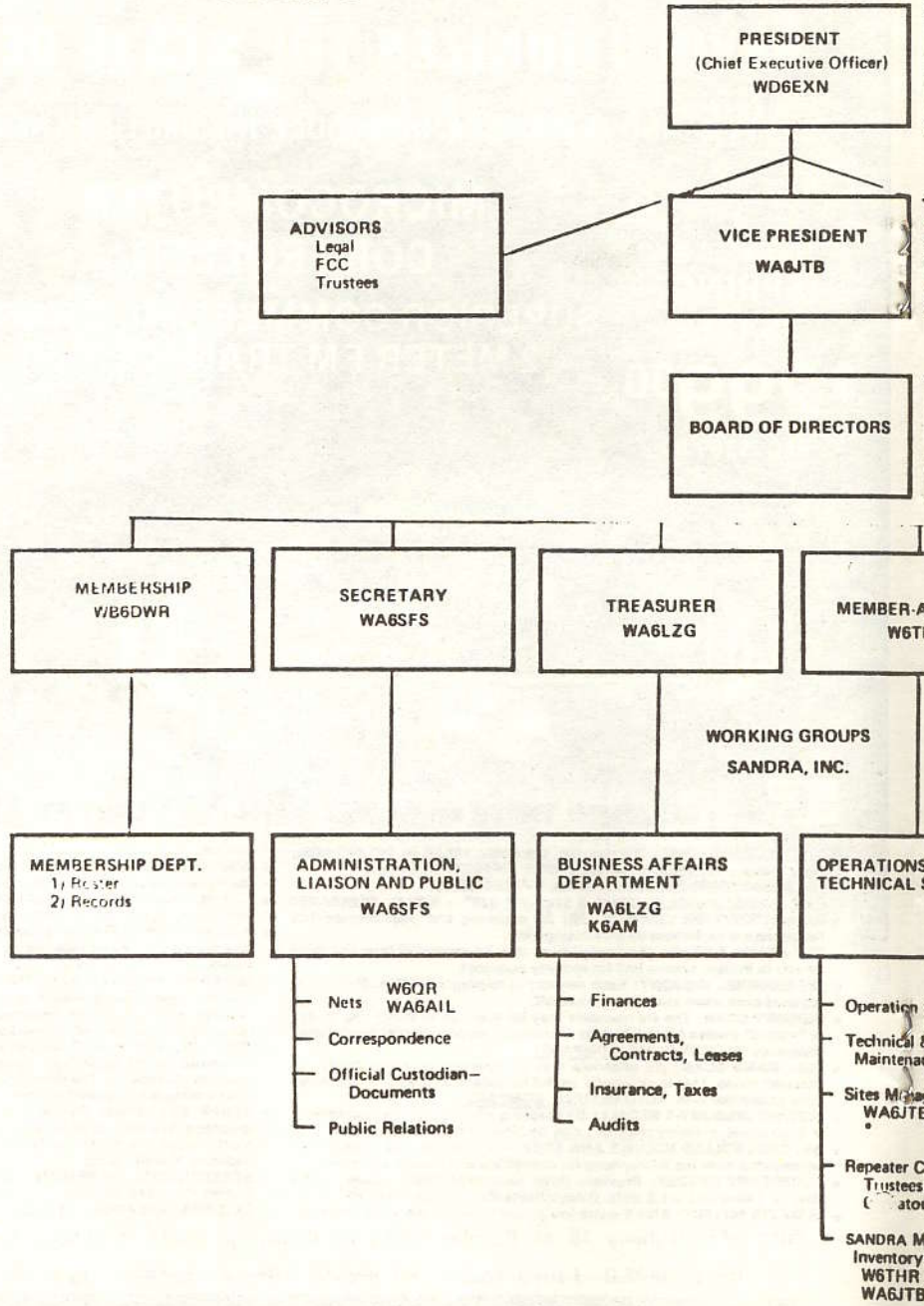
- **DIGITAL S/RP METER:** LEDs indicate signal strength and power output. No more mechanical meter movements to fall apart!
- **LARGE 1/2-INCH LED DISPLAY:** Easy-to-read frequency display minimizes "eyes-off-the-road" time.
- **PUSHBUTTON FREQUENCY CONTROL FROM MIC OR FRONT PANEL:** Any frequency may be selected by pressing a microphone or front-panel switch.
- **SUPERIOR RECEIVER SENSITIVITY:** 0.28 uV for 20-dB quieting. The squelch sensitivity is superb requiring less than 0.1 uV to open. The receiver radio circuits are designed and built to exacting specifications, resulting in unsurpassed received-signal intelligibility.
- **TRUE FM, NOT PHASE MODULATION:** Transmitted audio quality is optimized by the same high standard of design and construction as is found in the receiver. The microphone amplifier and compression circuits offer intelligibility second to none.
- **OTHER FEATURES:** Dynamic Microphone, built in speaker, mobile mounting bracket, external remote speaker jack (head and radio) and much, much more. All cords, plugs, fuses, microphone hanger, etc. included. Weight: 6 lbs.
- **ACCESSORIES:** 15' REMOTE CABLE.....\$29.95. CS-6R A/C POWER SUPPLY.....\$49.95. TOUCHTONE MIC. KIT.....\$39.95. EXTERNAL SPEAKER.....\$18.00.

Turn off Highway 78 at Rancho Santa Fe Road, go south 2 blocks to Grand Ave, turn left.

Merit W6NLO Floyd W6JSP Ed WB6WQI Brooke WB6WBB Jack WB6ZRP Ken PH0NY

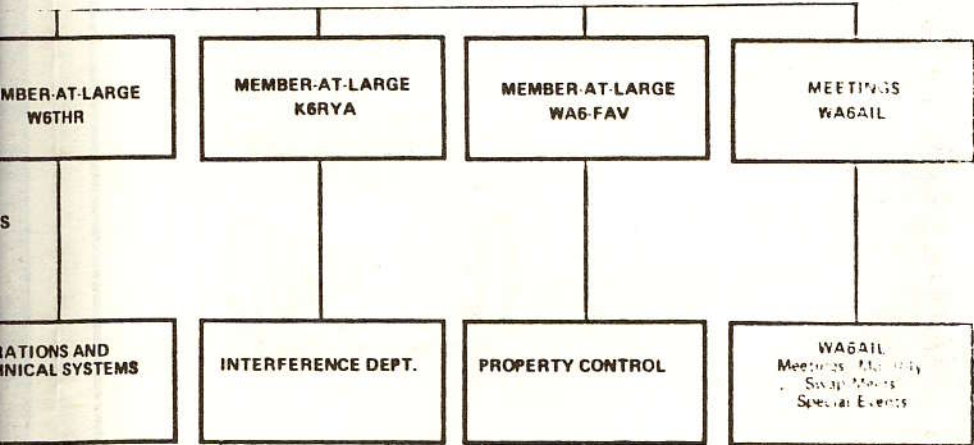
**WESTCOM**
ENGINEERING1320 Grand Avenue San Marcos
California 92069 (714) 744-0728

ORGANIZATION CHART



BOARD OF DIRECTORS
SANDRA, INC.

"SQUELCH TALES" ED.
WA6GDC
PUBLICATIONS



operation W6THR
 Technical & Maintenance K6RYA
 Sites Management WA6JTB
 Repeater Control Trustees Coordinators
 SANDRA Material Inventory W6THR K6RYA WA6JTB WA6FAV

Procedures
 J-Hunt
 Education & Monitoring

Custodial

Approved 1 May 1980
Board of Directors



WESTERN RADIO

ELECTRONICS

SERVING ALL OF YOUR ELECTRONIC NEEDS SINCE 1932

P. O. BOX 790

1415 INDIA ST. 92101

(714) 239-0361

Brand new from
Tele-Tow'r Manufacturing
Company

**The only
completely
free-standing,
telescoping,
breakover tower
you can buy.**

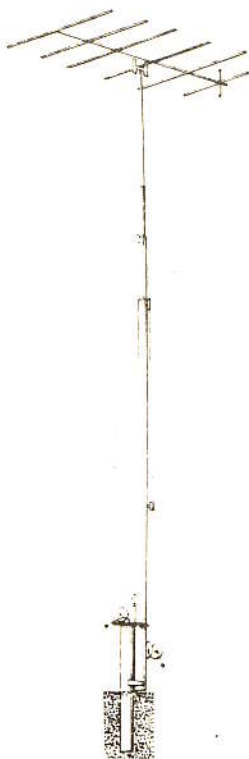
They telescope. Crank up or down
easily to pinpoint best reception.

They breakover. Your feet never
have to leave the ground when you
pull maintenance—even on our
tallest breakover tower.

One-piece price. You get the
whole tower, ready to install. No
extra charges for base plates, guy
wire, etc.

Old-fashioned craftsmanship.
Every Tele-Tow'r is cut, assembled,
and welded by hand.

Old-fashioned value. Orville Bond
found a way to make better towers
for less money. Our model 40—
which we believe is the most dura-
ble, convenient non-breakover



40-footer you can buy—
Our Breakover Model 55—the only
tower you can buy that is totally
free-standing, telescoping, and a
breakover—

Completely free-standing. No guy
wires, no brackets. Yet, by stretching
the windload over the entire
tower, we've made them stronger
than wired or bracketed towers.

Looking for more tower power?
Look for Tele-Tow'r Manufacturing
Company, Inc. Ask your dealer, or
write us for a brochure and names
of dealers in your area.

40' Standard	259.10
40' Breakover	440.62
55' Standard	473.97
55' Breakover	661.75

TELE TOW'R

Tele-Tow'r
Manufacturing Company,
Box 3412, Enid, OK 73701

MAY SPECIALS

#1 CDE CD45
ROTOR
WAS \$109.95
NOW 99.95

#2 SWAN 742
MOBILE ANT
WAS \$109.95
NOW 88.50

#3 SWANTB3H
3 ELEMENT BEAM
WAS \$219.95
NOW 174.95

#4 HY-GAIN TH-3M3
3 ELEMENT BEAM
WAS \$229.95
NOW 195.95

WGKCK
JOE

WAGENU
BOB

WB6IIK
MIKE

WB6CDA
STEVE

SHANKS & WRIGHT ELECTRONICS



239-0176
EXCEPT SAT. & SUN.
(WHEN WE ARE HAMMING!)

...we are known everywhere for the quality of our parts!

WATCH IT!

2045 KETTNER BLDG.
SAN DIEGO, CA.
92138

ONE WAY!

BOARD OF DIRECTORS MEETING - 1 MAY 1980

Called to order at 1930. All Board members present plus 12 members.

Minutes of last meeting were approved.

Treasurers report: Balance \$3085.93. Building Fund \$119.50.

Membership Chairman report: 802 current members.

Systems manager report: Bill W6THR, reviewed the relocation plan. Application with the CDF for LYONS PEAK site is progressing satisfactorily. A meeting with the senior communications engineer of SDG&E resulted in his expressed acceptance of our suggested location on their site. Inventory of SANDRA equipment is incomplete. Assistance in learning the whereabouts of SANDRA equipment and property is needed. If you have or know of any SANDRA property, please contact WA6FAV, K6RYA, or WA6JTB. A spray paint logo is being designed to place on all our equipment. Trustees will be meeting with designated Board members to visit each site to inventory equipment located there. Since various permanent sites are being considered, Bill suggested that a comparative analysis be conducted by each member of the board plus Wayne W6PDA, Paul WA6GDC, (volunteers for building chairman) and the trustees, so as to ensure that the best overall site be selected. A motion was made (W6THR), seconded (K6RYA) and approved, to conduct the analysis. Board members were assigned analysis areas to be researched and reported on at the May membership meeting. Bill introduced a letter from the Bureau of Land Management, requesting a non-refundable payment of \$100 be forwarded to cover "monitoring of construction, operations, maintenance and termination of the authorized facility"; i.e., our Right-of-Way-Grant. Harlow WA6LZC, will research the details of the request, such as the frequency of the payment and the authority for such.

Howard K6RYA, suggested a modified wording of the ten "Accepted Procedures" for SANDRA repeater operations. A motion was made (K6RYA), seconded (W6THR) and passed, adopting the modifications. (see inside back cover). Keith WA6FAV, was assigned the job of updating the entire "Repeater Procedures" handout to be in agreement with the revised procedures.

Bill WA6DWR, announced a need for more copies of the By-Laws and application forms. It was determined that there does not exist an up-to-date printing of the SANDRA By-Laws but that Larry N6LY, has a copy and upon his return a new printing will be made. The application forms will not be revised at this time since Bill has at least two months supply.

Meeting Chairman report: Larry WA6AIL, announced that the program for the May membership meeting will feature Glenn K6NA, who will give his slide presentation on a KINGMAN REEF DX-PEDITION in which he participated. Various alternative board meeting locations and dates were discussed. It was agreed to by all members of the board that the first Thursday of each month remained the best time to meet the schedules of the board,

therefore, the board meetings will continue on the first Thursday of each month, starting at 1930, held at the BONANZA restaurant on El Cajon Blvd. Larry is looking for suggested future membership meeting programs. Any ideas are most welcomed.

Squelch Tales Editor report: Paul WA6GDC, advised that for everyone's edification, issues resolved at SANDRA meetings will be reflected in the next issue of Squelch Tales.

Autopatch policy. Recently, the restricted dissemination of the autopatch access code to members only, was openly questioned and discussed on the 04/64 repeater during and after the Sunday night net. The issue was discussed indepth and Larry WA6AIL and Jay WA6SFS, were tasked to summarize SANDRA policy for promulgation.

Re-imbersement policy. The method and limitations of payment of expenses required in connection with the maintenance of SANDRA repeaters, was considered as not clear and well understood. After extensive discussion, a motion was made (WA6LZG), seconded (WA6DWR) and passed, stipulating that the Treasurer is authorized a \$50 maximum for routine business and re-imbersement for maintenance expenses and that \$15 per trip to repeater sites outside San Diego proper, be authorized to be paid by the Treasurer to the Trustee, or his authorized representative.

Del Mar Fair Booth. Dave N6BSD, reported that SANDARC has obtained a booth at the Del Mar Fair for the purpose of promoting amateur radio. (21 June - 6 July). As a member of SANDARC, the SANDRA representative agreed, on behalf of SANDRA, to accept the dates of 28-29 June as our dates for being responsible for the booth. A motion (WA6SFS), seconded (WA6DWR), and passed, was made stipulating that we participate and that a Booth Chairman be selected to coordinate our effort. Larry WA6AIL, was appointed chairman.

SANDRA insurance. Harlow WA6LZG, discussed the limits of our current insurance, raising the question of membership coverage. WA6LZG, along with Gill W6QR, were tasked to research the exact extent of insurance coverage provided to SANDRA and to report as soon as possible to the President.

Gene WD6EXN, submitted to the board a SANDRA organizational chart. A motion was made to accept the chart as presented (WA6SFS), seconded (W6THR) and was passed. (Chart was the product of two months of each board members work)

Bill W6THR, submitted the job description for the Operations & Technical Systems Department. A motion was made to accept the description (K6RYA), seconded (WA6SFS), and was passed.

450mhz MT LAGUNA machine. Wayne W6PDA, advised the board that the 450mhz repeater is operational on 444.825 (R)/449.825 (T) 1B-PL.

Meeting was adjourned at 2150.....(whew)

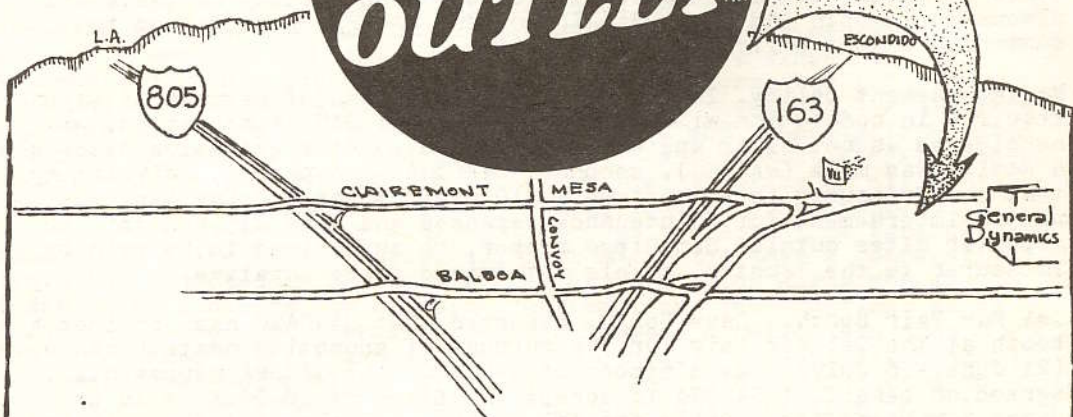
Jay
WA6SFS

TOM Mc DUFFIE
KB6GU

GLENN RATTMAN
K6NA

HAM RADIO OUTLET™

10 AM -
5:30 PM
MON - SAT



NEW PRODUCTS

TR 9000	Reg \$499.95	Special \$449.95
IC 260A	489.00	440.00
COLLINS KWM 380	2,995.00	Call for package

KENWOOD FACTORY-HRO PROMOTION

TS1B0S - incl. cascaded 2ndSSB filter Reg \$1209.90
ON DISPLAY - COME IN AND SPIN THE KNOBS! Now \$ 999.00

560-4900

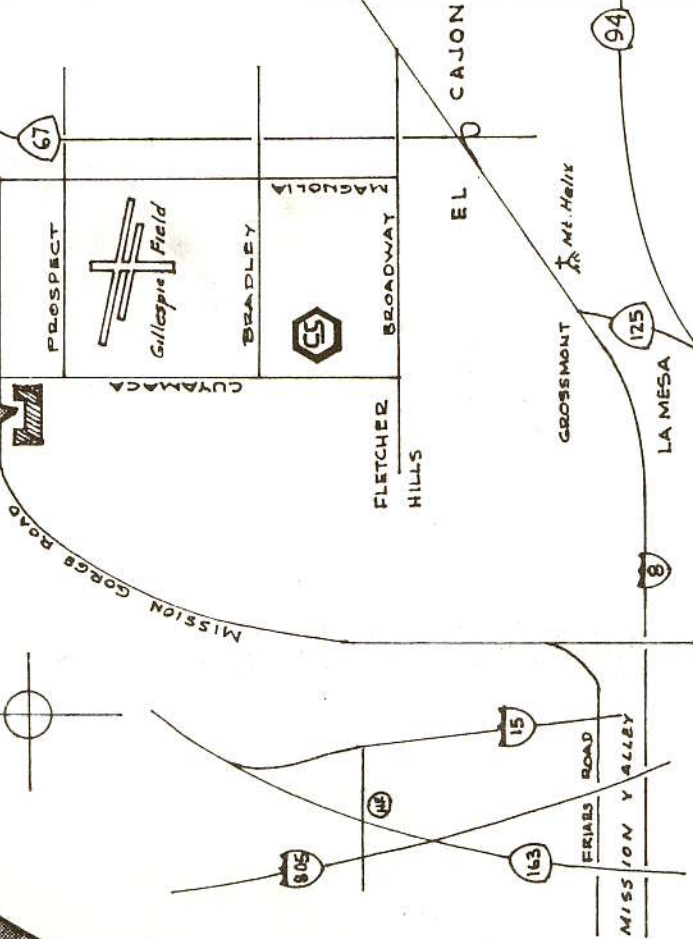
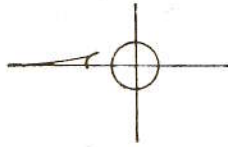
5375 KEARNY VILLA ROAD • SAN DIEGO • CA

7am

**FIRST SATURDAY
OF EACH MONTH**

**Santee
Dive-In**

SANTEE GRILL & FAMILY RESTAURANT



COUPON

SANTEE GRILL
and Family Restaurant
9569 Mission Gorge Road

HAM RADIO SPECIALS

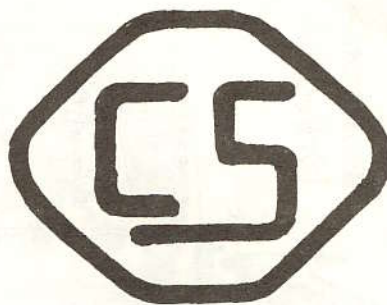
1 waffle, 2 eggs,
2 bacon
coffee or tea
\$2.10

\$1.99
Denver omelette,
biscuits
hash browns

DISCOUNT

SANTEE SWAP MEET

C+S supply



SURPLUS ELECTRONICS

Power supplies
IC's • switches
PC boards • relays
wire • fans • motors
connectors • meters
solenoids • lamps
hardware • etc!

1469 Cuyamaca, El Cajon

448-5000

SANDRA, Inc.

CIRCULATION
OVER 900

San Diego Repeater Association

P. O. Box 81103

San Diego, CA 92138



BULK RATE
U. S. Postage
PAID
SAN DIEGO
CA.
PERMIT
1520

Mark your calendar:

THURSDAY
MAY 15

GENERAL MEMBERSHIP MEETING
7:30 PM, 4044 IDAHO, SAN DIEGO
Glen KeNA (HRO manager) will show
slides and talk about DXpedition to
lonely Kingman Reef.

SATURDAY
MAY 17

"T" hunt for Chuck WD6APP 146.76
starts from Del Cerro at 7:30 PM

SUNDAY
MAY 18

GOLDEN BEAR NET PICNIC
Mission Bay South of De Anza Cove
Wayne Green W2NSD/1 will deliver
a few thousand words in Anaheim.

TUESDAY
MAY 20

OFFICIAL BOARD MEETING open
to all members of SANDRA.

THURSDAY
JUNE 5

SANTEE SWAP MEET
Note: Gates open at 7:00 AM !!!!!

SATURDAY
JUNE 9

Informal and unaffiliated breakfasts
at several locations. Make inquiry
on 146.04/64.....enjoy!

EVERY
SATURDAY