

SQUELCH TALES

San Diego Repeater Association

VOLUME III

Number 2

February, 1975

WR6AJL, Mt. Laguna now operating on 16/76

The Mt. Laguna machine on [46.]6 in and [46.76 out is now operating, since the arrival of our new call sign, WR6AJL. The repeater was on low power at first, and it was found that the angle of radiation was high, the further away from the hill, the better the signal. Since Wayne, W6PDA and Dwight, W6SIG have scheduled visits which have to be attended by an Air Force man, they can't just work as long as they want to. So during the first few weeks while they are "ironing out the bugs" the repeater will not be on day and night 7 days a week. It has also been determined that we will probably need a different antenna, and it's pretty cold at that elevation to work on the antenna system just now! We did find out that a former member, W6NVL who is in Phoenix now, was able to access the repeater with a 2 W Handi-talkie when 50 miles east of YUMA. That's pretty good going east. Not one report of interference with Los Angeles stations has been heard, and we really do not expect any. The fellows in Mexicali also checked in one night and said they were having their club meeting and the repeater was getting in very well there. Thanks, Wayne and Dwight, for all your efforts and trips to the mountain. We all appreciate them.

AUTO-PATCH next...

The auto-patch committee is hard at work on the building of the autopatch. The actual repeater has been put into shape and tested by Stu, W6HEE, and the other associated hardware is being readied by Tom, K6EUW, and John, W6EIQ. A new frequency coordination by SCRA was requested, and we are waiting for frequencies now. So youse guys better get on the ball and get your touch tone pads ready, for it won't be too long before we won't have to say, "Is there a base station on that can make a call to the CHP?" All you will have to do is get on the autopatch and dial CHP yourself! Thanks to Stu and Tom and John for your time and efforts in our behalf.

Electronics Emporium International

7895 Clairemont Mesa Blvd.

San Diego, Calif. 92111

714-278-4393

AMATEUR RADIO EQUIPMENT NEW — USED TEST GEAR, SURPLUS, ANTENNAS

HF AND VHF EQUIPMENT - RECEIVERS, TRANSMITTERS, TRANSCEIVERS

TEST EQUIPMENT - OSCILLOSCOPES, SIGNAL GENERATORS, VTVM's

PARTS - COILS, CAPACITORS, CRYSTALS, TUBES, METERS, ETC.

INTEGRATED CIRCUITS - TTL, CMOS, Linears

309K Three-terminal regulator

Input: 7-30 volts

Output: 5 volts regulated at 1 A.

Short-circuit proof, in TO-3 package . . . \$1.75

8223 - Programmable Read-Only Memory (PROM)

256 bits as 32 8-bit words

TTL with 60-ns access time

Programming available, in 16-pin DIP . . . \$6.00

75451 - Dual Peripheral Driver

Two TTL 2-input NAND gates with open

collector drivers (30 volts, 300 mA)

In 8-pin miniDIP \$.65

For technical help on IC's, see Bob WA6HCA

WE TRADE — NEW/USED

**SEE: KARL W6PSI
HARVEY WB6YNQ**

STORE HOURS: 9:00 AM to 6:30 PM Monday thru Saturday, Sunday; Noon to 5 PM

SPLIT CHANNELING THE IC-230

When the SCRA decided in November to coordinate the split channels by a majority vote of the membership with in-low, out-high for 146 and in-high, out-low for 147 as in the standard repeater pairs. I ordered the "B" crystals as in the chart below. A short time later I discovered WR6A00 in Orange County on 295-895 (146 B-2) and worked it thinking everything would work out fine. Then the SCRA technical committee decided to defy the decision of the membership and reverse the frequencies for split channels (in-high, out-low for 146, and in-low, out-high for 147.)

To ideally cover all of the split channels from 146 to 148 you would need 7(seven) additional crystals. There are only provisions for 4. For each crystal you would have 10 consecutive channels, giving you a total of 40 channels. You have to decide where in the band to place these frequencies.

The chart below was designed primarily for use in San Diego eliminating splits either side of some of the major repeaters and giving us the capability of both input and output combinations. One could get by in only ordering 2 crystals for the now normal(?) split pairs. This would be the "A" frequencies, one for 146 and one for 147. In other words 147.885 would be in the 147 position, frequency A 2. Keeping in mind you are always dialing in the receive frequency and have the high or low transmit option as always.

	146	A	146	B		147	A	147	B
1.	.01		.61		27.	.60		.00	
2.	.025		.625		28.	.615		.015	
3.	.04		.64		29.	.63		.03	
4.	.055		.655		30.	.645		.045	
5.	.07		.67		31.	.66		.06	
6.	.085	1	.685	1	32.	.675	1	.075	1
7.	.10		.70		33.	.69		.09	
8.	.115	4	.715	4	34.	.705	4	.105	4
9.	.13		.73		35.	.72		.12	
10.	.145	7	.745	7	36.	.735	7	.135	7
11.	.16		.76		37.	.75		.15	
12.	.175	0	.775	0	38.	.765	0	.165	0
13.	.19		.79		39.	.78		.18	
14.	.205	3	.805	3	40.	.795	3	.195	3
15.	.22		.82		41.	.81		.21	
16.	.235	6	.835	6	42.	.825	6	.225	6
17.	.25		.85		43.	.84		.24	
18.	.265	9	.865	9	44.	.855	9	.255	9
19.	.28		.88		45.	.87		.27	
20.	.295	2	.895	2	46.	.885	2	.285	2
21.	.31		.91		47.	.90		.30	
22.	.325	5	.925	5	48.	.915	5	.315	5
23.	.34		.94		49.	.93		.33	
24.	.355	8	.955	8	50.	.945	8	.345	8
25.	.37		.97		51.	.96		.36	
26.	.385		.985		52.	.975		.375	
					53.	.99		.39	

146.685	13.8577	B	147.075	13.9011	B
	(124.72)			(125.11)	
146.085	13.7911	A	147.675	13.9677	A
	(124.12)			(125.71)	

LO Freq	MHz	13,783 (124,048)	13,818 (124,348)	13,848 (124,648)	13,883 (124,948)	13,914 (125,248)	13,948 (125,548)	13,983 (125,848)																		
CO Freq	100 kHz	0	1	2	3	4	5	6	7	8	9	A	B	0	1	2	3	4	5	6	7	8	9	A	B	
11,365	0																									
11,280	1																									
11,478	2																									
11,390	3																									
11,295	4																									
11,606	5																									
11,418	6																									
11,325	7																									
11,836	8																									
11,445	9																									
	C																									
	V																									
		146 (MHz)												147 (MHz)												

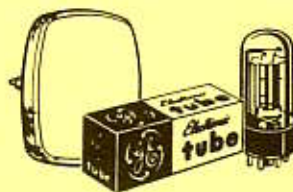
Should you desire other frequency combinations, the formula used for calculations was:

$$f_{x_{10}} = \frac{(f_0 - 11,265) - 10 \cdot 7}{9}$$

Ed, W6GYX

WILLY'S ELECTRONIC SUPPLY CO.

1636 "D" AVE. 477-2119
NATIONAL CITY, 3981



AUTHORIZED DISTRIBUTOR

RECEIVING TUBES ENTERTAINMENT SEMICONDUCTORS AND PERMA-CELL® BATTERIES

HOURS -
MON. - THRU - SAT.
10-6

PHONE 477-2119
1636 "D" AVENUE
NATIONAL CITY, CALIF.

WILLY'S
ELECTRONIC SUPPLY CO., INC.

HI-FI & STEREO
NEEDLES - CARTRIDGES - SPEAKERS
RADIO AND TV TUBES AND PARTS

FRIDAY NIGHTS TILL 9

**SPRAGUE
Q-LINE
CAPACITORS**

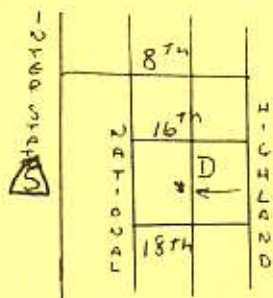
**SPRAGUE
Q-LINE
RESISTORS**

SPRAGUE... world's largest
component manufacturer



DISTRIBUTOR PRODUCTS

CENTRALAB Electronics Division • GLOBE-UNION INC



A DIVISION OF
LITTON INDUSTRIES



audio accessories
SWITCHCRAFT

**BUNKER
RAMO** **AMPHENOL**

J. W. MILLER

ELECTRONIC COMPONENTS

R.F. INDUCTORS AND TRANSFORMERS

CAPACITORS - RELAYS

Gentlemen;

Enclosed is my check for this years dues. Thanks for the reminder. Like last semester, I have a Thursday evening class so I'll be unable to attend most of the meetings.

I would like to take a few minutes to add some input on a subject I consider most important, that of split-split channel assignments. I have discussed this with some of the members and would like to amplify it here.

I agree with most of the comments of WB6JPI in the last issue of Squelch Tales in that we need a 15kHz "plan" and the reverse split works in certain instances, but it should not be considered a panacea. Before we get locked into a cumbersome plan, let us not forget that the modified Texas plan was adopted for some very sound technical reasons. Reasons that exist today even noreso.

I firmly believe split-splits can be assigned in accordance with the modified Texas plan if all of the following points are taken into consideration:

- #1. Adjacent and co-channel interference.
- #2. Geographical seperation based on #1.
- #3. Geological considerations. (Placing the repeater on the side of a mountain can provide necessary shielding in some circumstances.)
- #4. Power level. (Is it necessary to "blanket" an area 100 miles away, especially if they have their own machines?)
- #5. Consultation between frequency coordinators, technical representatives of the prospective assignee and tech-reps of adjacent and co-channel owner/users is a must.

While not attempting to imply all of this will be easy, and some compromises will have to be made, surley in the long run a lot of hassles will be avoided. Obviously the SCRA technical committee did not do their homework when they assigned W6PDA an input of 146.160 MHz and WB6PLZ an output of 146.175 MHz, both in the San Diego area and separated by only 15 kHz.

Happy operating in '75,

Ken

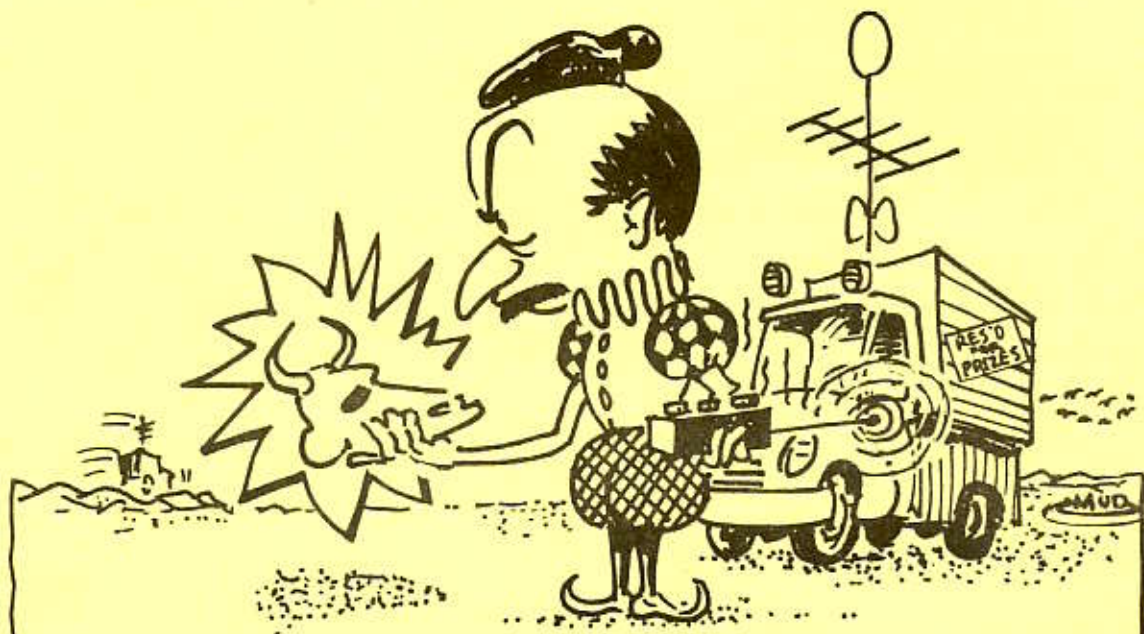
WA60SB

MINI-MINI SWAP NET: For sale or trade (1) HT-200 new case, new wiring harness and speaker. (1) 450 Rubber Duckie ant for HT and Back Battery cover. (1) Motorola 2 M Mobil U43GGT 2 Freq, 04-64 and 94-94 Control Group and mike 30 Watts PL transmitter clean and in excellent shape \$100. Phone Bayard: Days 286-6063 and nights: 277-9036.

1ST ANNUAL DESERT T-HUNT

OCOTILLO WELLS & ?

SPONSORED BY ESCONDIDO AMATEUR RADIO CLUB



- ★ PARTY SATURDAY NITE IN OCOTILLO
- ★ T-HUNT BEGINS DAWN SUNDAY (2-16)
TO FIND FIVE X-MTRS ON 146.76 MHZ
- ★ BRING YOUR OWN GROCERIES, PJ'S
AND WOOD FOR SAT NITE BONFIRE

UFO INSTRUMENTATION DEVELOPED

Instrumentation designed to detect and monitor unidentified flying objects (UFOs) has been developed by a San Diego group, Precision Monitoring Systems.

The organization is made up of eighteen scientists and engineers, many of whom are local Hams.

By early March of 1975, each of the members will have a magnetometer in operation at his home or office, thus creating a detection network extending from Poway to Imperial Beach and Alpine to the coast.

J. F. Herr, director of the group, said that any one of the magnetometers is capable of sensing a UFO at least 8 miles distant.

He explained that there are several hundred cases on record where powerful magnetic fields have been associated with the presence of UFOs.

The evidence for this includes the deflection of compass needles up to two miles from observed UFOs, the magnetization of watches and clocks in the near vicinity of UFOs, the tripping of burglar and freezer alarms, and power outages traced to magnetic disturbances of relays.

The magnetometers have a sensitivity of .05 gamma at a frequency of 1 Hz. The instrument is thus capable of measuring changes less than the natural geomagnetic variations. The magnetometer, which has a passband of .1 Hz to 10Hz, uses a highly sensitive induction coil sensor. Five integrated circuits give the instrument a gain of 440,000, a rejection of 60 Hz interference by 110 db, and an extremely low noise level.

When the network is in operation, Herr said, the group will add other sensing devices to each station.

Among these instruments will be microwave radiometers, three-channel RFI (static) detectors, and electrometers.

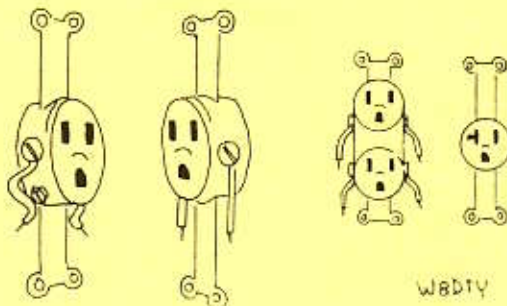
Coupled to the sensors will be automated motion picture cameras equipped with very wide-angle lenses and pointed straight up from roof tops. The camera will be triggered whenever a detector senses a possible UFO.

The design effort is voluntary, but there is a \$1,500 fund to cover the cost of experimental prototypes.

Herr said the most urgent need of the organization is for persons with strong background in circuit design to aid in the development of new sensors.

To assure rapid correlation of UFO sightings by the general public with sensor readings, the group maintains a 24-hour UFO reporting service (telephone: 286-0808).

The address of Precision Monitoring Systems is P. O. Box 15064, San Diego, Ca. 92115.



"Talk about a couple of weirdos...."

SALE

Limited time special



WESTERN RADIO

Whips

Inflation

Now!!!



**LIMITED
TIME
OFFER**

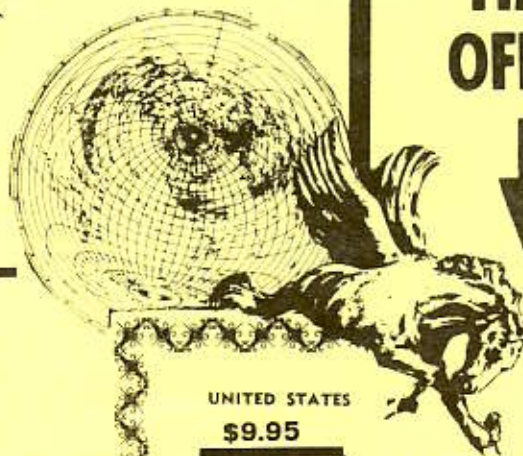


Radio
Amateur

callbook

REGULAR PRICE

U. S.	FOREIGN
\$12.95	\$11.95



UNITED STATES

\$9.95

FOREIGN

\$8.95

Just present this
coupon when you come in.

75

 callbook

Offer
good
until

FEB.

Gene W6PYX
Ernie W6MQE
Art W6HQL
Ken W6K5B

We'll be glad to help
you WIN

1415 INDIA STREET / SAN DIEGO, CALIFORNIA 92101

239-0361

For the first time in San Diego County, 2 meter FM played a major part in the Simulated Emergency Test (S.E.T.) when our two major repeaters were used. 04/64 was used as a Liaison net between fire and police and WB6DGR served as net control using the call W6GBF/6. Bill reported 35 checkins and around 50 messages handled.

The 13/73 Palomar repeater was used for Red Cross business and evacuation stations also reported in. 82 pieces of traffic were handled and the Net Control was W6GIC with the call W6SRS. Traffic was also passed to Orange County and Tulare County.

There is much room for improvement in operating techniques in an emergency, but much was learned by the operators who took part in the operation. Now we will just have to remember to be better prepared next year!

INCORPORATION PROPOSED

The Board of Directors has been discussing the possibility of going through Incorporation procedures. What do you, the members, think? We have a lawyer who will do it for just the filing fees, approximately \$150. WA6SND, Bob, says he would not like to be on the Board of Directors if we do not incorporate, because of possible suits, etc. This will be discussed more at the general membership meeting, so be there to give your views.

TREASURER'S REPORT

Beginning Balance January 1, 1975 \$ 455.75

Income

Door Prize	\$ 38.95	
Dues & Initiation	310.00	
Donation	80.00	
Donation- Laguna	10.00	
Advertising- 3 mos.	230.00	
Palomar	45.00	
Miscellaneous	<u>3.00</u>	
TOTAL INCOME		\$ 716.95

Expenses

Squelch Tales	\$ 65.08	
Postage	29.87	
Auto Patch	37.00	
450-Repeater	32.70	
Laguna	56.17	
Palomar	30.00	
Supplies	40.47	
Miscellaneous	<u>33.19</u>	
TOTAL EXPENSES		\$ 324.48

Ending Balance January 31, 1975 \$ 848.22

Note: All reimbursements must be accompanied by an itemized bill or receipt and presented to the treasurer.

GARY RADIO

DISTRIBUTOR FOR AMATEUR - MARINE - CB EQUIPMENT

YAESU is here!



• Solid State 160 thru 10 Meter Transceiver

This deluxe rig is the descendant of the world famous FT-101 transceiver. Except for the driver and final amplifier stages, the FT-101B features all solid state circuitry, built on reliable "computer type", plug-in modules. The FT-101B is contained in a compact, thirty pound (15 Kg.) package designed to go anywhere. All that is needed for instant "on the air" operation from 160 thru 10M is either 12 VDC or 100-234 VAC and an antenna. The FT-101B is truly quality radio from the world's leader in amateur radio communications.

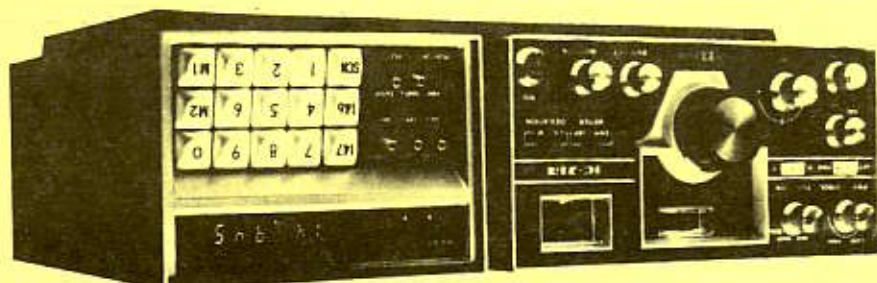
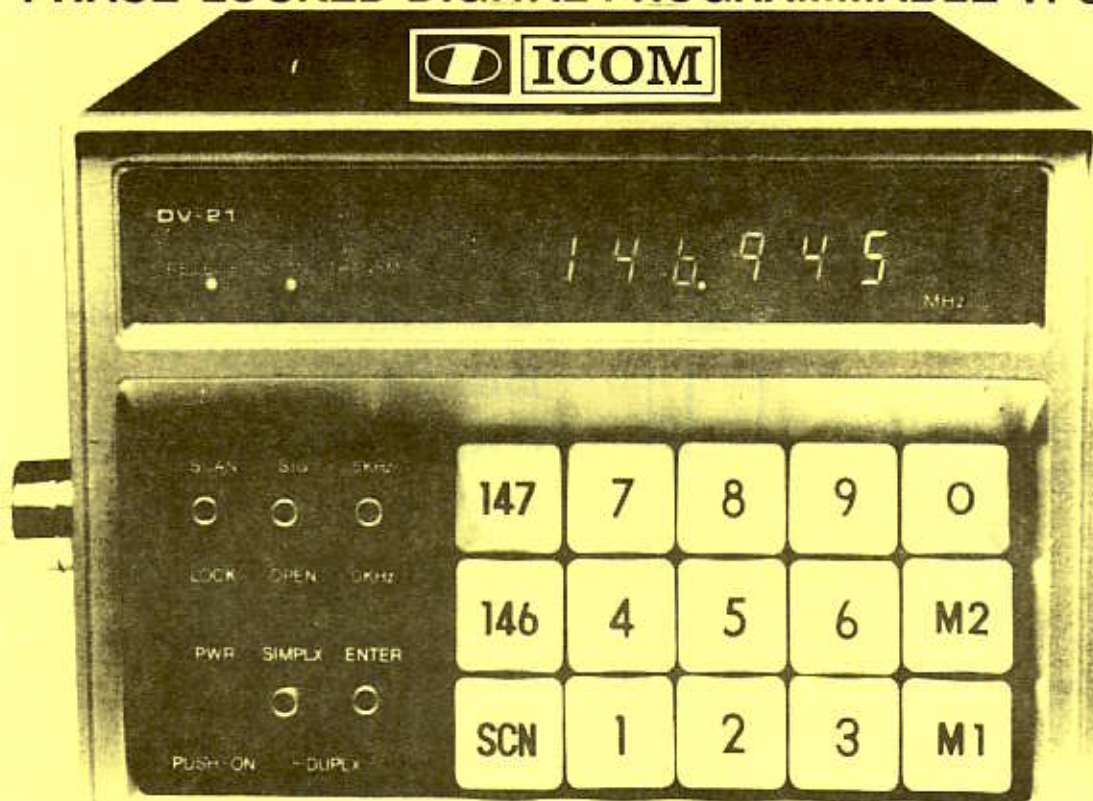
8199 CLAIREMONT MESA BOULEVARD
SAN DIEGO, CALIFORNIA 92111
(714) 292-1440



GARY PIERCE, K6CAQ, MANAGER
STEVE ADAMS, K6PD, PRESIDENT

GARY RADIO

TRULY UNIQUE... ICOM DV-21 PHASE LOCKED DIGITAL PROGRAMMABLE VFO



- Program any frequency you want... any frequency split you desire.
- Scan... active or inactive frequencies... adjustable scan rate.
- LED Digital readout on transmit and receive.
- The ICOM IC-21A and the DV-21... a truly advanced and unique package well ahead of its time.

8199 CLAIREMONT MESA BOULEVARD
SAN DIEGO, CALIFORNIA 92111
(714) 292-1440



GARY PIERCE, K6CAQ, MANAGER
STEVE ADAMS, K6PD, PRESIDENT

ELECTRONIC SUPPLIES

SW

.. *SINCE*
1945



W6BZE
W6OSD



SPRAGUE
GENERAL ELECTRIC
BELDEN
CALIFORNIA CHASSIS
TRI-EX TOWERS
HY-GAIN
CUSH-CRAFT
TURNER
E. F. JOHNSON
STANCOR
THORDARSON

SHANKS & WRIGHT INC.

2045 KETTNER BLVD.
SAN DIEGO, CALIF. 92138
714/239-0176

F.C.C. Amateur Radio Licensing Class

Provided by the Hoover-Crawford Adult School, Lyman Ellis, Instructor

Tuesday and Thursday, 9:00 - 11:30 A.M.

Beginning February 4, 1975 and running through the Spring semester

Normal Heights United Methodist Church

4650 Mansfield Street, San Diego 92116

near 35th Street and Adams Avenue, and across from John Adams School

Prepare for the Novice Technician, General, and/or Advanced Class licenses

Enroll at the class, by calling the school office at 282-7683 or by calling the Church office at 284-9243, or by calling the instructor at 284-3234. There is no charge. You provide your own books.

Anyone is welcome. Pre-requisite knowledge about electricity:

- Know how to turn on a light.
- Know how to plug in an appliance.
- Know how to replace a light bulb.

The class will include instruction in:

- Procedures for amateur radio operation.
- Understanding and applying the F.C.C. Rules and Regulations.
- Sending and receiving the International Morse Code.
- Basic electrical and electronic theory and its applications.
- How to take a F.C.C. amateur radio license examination.

Texts:

The Radio Amateur's License Manual, The American Radio Relay League, Inc., Newington, Connecticut, Published April 1974 or later. (\$1.00)

Ameco Amateur Radio Theory Course, Martin Schwartz, Ameco Publishing Corp., Williston Park, New York 11596, c. 1968 (about \$.50)

Other helpful books:

The Radio Amateur's Operating Manual, George Thurston, ARRL, Newington, Connecticut, c. 1969 or later. (\$1.50)

electricity one-seven, Harry Mileaf, editor-in-chief, Hayden Book Company, Inc. Rochelle Park, New Jersey, c. 1966. (\$.15.95)
or the individual volumes of electricity one through electricity four, and electricity six.

electronics one-seven, Harry Mileaf, editor-in-chief, Hayden Book Company, Inc. Rochelle Park, New Jersey, c. 1967. (\$17.95) or
the individual volumes of electronics one through electronics seven.

The ARRL Antenna Book, ARRL, Newington Connecticut, c. 1974 (\$3.00)

A Course in Radio Fundamentals, George Grammer, ARRL, c. 1972. (\$.2.00)

The Radio Amateur's Handbook, (Headquarters Staff), ARRL, c. 1975. (\$.5.00)

How to Become a Radio Amateur, ARRL, c. 1974. (\$.1.00)

Modern Dictionary of Electronics, Rudolf F. Graf, Howard W. Sams & Co., Inc. & The Dobbs-Merrill Co., Inc., Indianapolis, Kansas City, New York, c. 1962, 1963, and 1968

Books may be purchased at:

- 1 - Hoover-Crawford Adult School Book Store, Hoover High School campus, Bungalow 5, Mon.-Thurs., 6-9:30 p.m., Ameco text only.
- 2 - Communications Headquarters, Inc. 930 W. Washington St. SD, 298-0680
- 6 - Western Radio, 1415 India St., SD, 92112, 239-0361
- 4 - Gary Radio, 6199 Clairemont Mesa Blvd., SD 92111, 292-1440
- 3 - Electronics Emporium International, 7895 Clairemont Mesa Blvd. SD 92111 278-4393
- 5 - Heathkit Electronic Center, 8363 Center Drive, La Mesa 461-0110

Sigmasizer-200R



● 200 Channel Synthesized Transceiver

YAESU now offers the FM enthusiast a complete, solid-state, 200 channel 2 Meter FM transceiver. The Sigmasizer-200R features advanced, synthesized circuitry for total repeater and simplex coverage of the 144 to 146 MHz or 146 to 148 MHz FM band. Frequencies are selectable in 10 KHz increments and front panel selectable ± 600 KHz transmitter offset oscillators give complete flexibility for repeater operation. A built-in tone burst oscillator is included for activation of tone coded repeater systems. A priority channel may be preset for instant selection of your favorite channel. Automatic final protection against high VSWR is another total performance feature of this outstanding transceiver.

Specifications

GENERAL

Frequency Range: 144 to 146 MHz or 146 to 148 MHz.
Number of Channels: 200 (10 KHz intervals) Simplex and ± 600 KHz TX offset for Repeater operation.
Mode: FM.
Frequency Stability: $\pm 0.001\%$.
Antenna Impedance: 52 Ohm unbalanced.
Power Source: 13.8 V DC (negative ground).
Power Requirement: 0.45A receive, 2.2A transmit.
Size: 220(W) \times 80(H) \times 230(D) m/m.
Weight: 3 Kg.

RECEIVER

Sensitivity: $0.3 \mu V$ for 20 dB quieting
Selectivity: ± 8 KHz at 6 dB, ± 16 KHz at 60 dB.
Audio Output: 2 Watts at 4 Ohm

TRANSMITTER

RF Output Power: 1 or 10 Watts.
Spurious Radiation: -60 dB minimum.
Deviation: ± 5 KHz nominal.

\$449

BUSINESS - CB - HAM RADIO SALES - SERVICE
COMMUNICATIONS HEADQUARTERS, INC.

COMMUNICATIONS HEADQUARTERS, INC.
930 WEST WASHINGTON ST.
SAN DIEGO, CA 92103
PHONE 714-298-0630



SOUTH WESTERN DIVISION CONVENTION

OCTOBER 24-26, 1975

Holiday Inn
VENTURA, CALIFORNIA

FUN FILLED WEEKEND

**R-V SPACES
NEAR THE BEACH**



BY THE SEA
& ON THE
BEACH



▶ HOSPITALITY ROOM

▶ CONTESTS

▶ NO HOST COCKTAIL PARTY

▶ TALK IN STATIONS

▶ TECHNICAL SESSIONS

▶ BANQUET

▶ EXHIBITS

▶ BREAKFASTS

▶ LADIE'S PROGRAM

▶ PRIZES

***Come to
Where the
Action is!***

NOTICE!! 15% DISCOUNT
TO SANDRA MEMBERS!
JIM, K6U2P

76

TUNE-UP
SERVICE

WHEEL
ALIGNMENT

CERTIFIED
AUTO-CARE

BRAKE
SERVICE

* NO JOB
TOO LARGE OR
SMALL

AIR
CONDITIONING
SPECIALIST

COMPLETE
DIAGNOSTIC
SERVICE

CERTIFIED
TIRE
SPECIALIST

***Stephens
Good Neighbor Country***
DIAGNOSTIC TEST CENTER OF CLAIREMONT
2576 CLAIREMONT DRIVE CALL 276-4776

Board of Director's Meeting Feb. 6
4650 Mansfield

Board Members Present: K6QL, W6GIC, WB6DGR. Later W6PDA and WA6SIG.
Guests: Many

Since there was not a quorum present, no business could be conducted.
Therefore, this is a report of discussion and reports.

1. The treasurer reported a balance of \$848.22
2. The Secretary reported receipt of new Insurance Policy. Also, she reported on the new officers of SCRA, where she represented our group. W6GIC was elected Secretary of SCRA.
3. WA6SND and WB6TYR reported on their investigations necessary to incorporate our Association. Services of a lawyer would be around \$150 and it was decided since the ballots were going out that the question would be asked of the members at the same time to save postage. Also, the secretary needs information for CARC on how many members are also ARRL members.
4. Stu, WB6HEE reported that his work on the repeater for the autopatch was finished. Tom and John are working on the rest of the system. Stu stated that if the club wanted to use his call for the autopatch he would like to have control of the site because it will be in his friend's house.
5. Lyman, Chairman of the Autopatch committee reported:
The committee met Feb. 4, 1975. The committee recommends that the following items be substituted for the original items as adopted Nov. 7, 1974.
 2. The location of the Autopatch be on Del Cerro, San Diego, in a private residence, the use of which is loaned on a personal basis to WB6HEE, Stu Hacken.
 7. That the Autopatch repeater be operated under the license WR6AIP issued to Stu Hacken.
 13. That authorization be given for a control system to be determined by the autopatch committee in cooperation with the licensee.
6. Final Slate to be on ballot: Pres: WB6PLZ, K6BWT, K6QL. V-Pres: WB6HEE, W6IDS, K6RKW, WB6CYT. Sec. WA6URS. Treas: WA6SIG, Editor: W6GIC Meeting: WB6AMT. Membership: W6PDA and WB6VIQ. Memb. at Large: WA6SND and WA6VQZ.
7. Wayne, W6PDA reported on Laguna. They will probably need a new antenna that will withstand snow and wind and will bring the angle of radiation down. Hours of work are limited.
8. WA6SND reported that WB6SQZ is no longer Communications Lt. for the Humane Society. Instead, Sam, K6BWT has been appointed Lt. in charge of Communications. He also reported they need help March 5,6,7,88 at a Hunter, Jumper Show at Rancho Bernardo from 8AM to 11PM in helping man the food booth.

Respectfully submitted
Sybil Allbright, W6GIC, Secretary

KLM ELECTRONICS

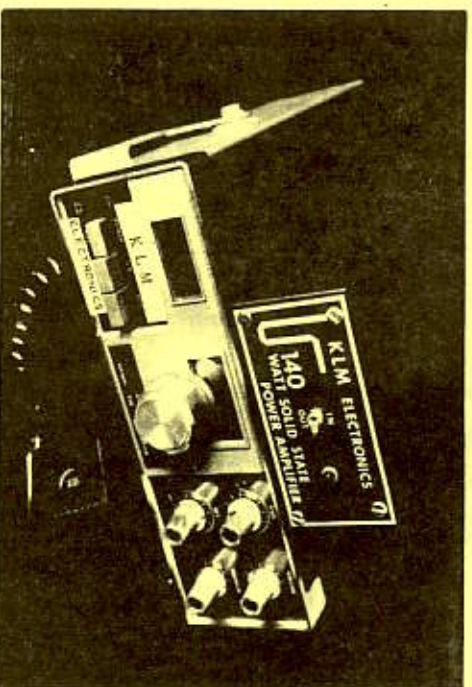
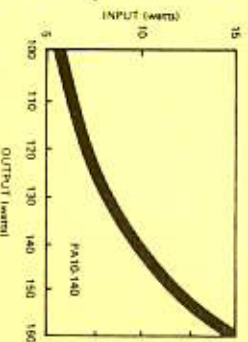
HF ANTENNAS

VHF & UHF ANTENNAS

SOLID STATE AMPLIFIERS

Typical Data Freq. 144 - 148 MHz VHF Solid State Power Amplifiers

No tuning micro-stripline circuits designed to take any phase of SWR and still provide reliable, optimum performance. Either automatic or manual switching and the RF inputs are compatible with the popular FM transceivers.



2-METER SINGLE-SIDE-BAND TRANSCEIVER

Model	Input Range (w)	Nominal Po (w)	Nominal Amps	Price
<i>IN STOCK!</i> PA2-17B	1 - 4	12	2.0	\$ 44.95
PA10-40B	5 - 15	40	5.0	79.95
PA10-70B	5 - 15	70	8.0	129.95
PA2-70B	1 - 4	70	10.0	149.95
PA10-140B	5 - 15	140	18.0	189.95
PA30-140B	15 - 40	140	15.0	169.95
PA2-140B	1 - 4	140	20.0	219.95

*2 METER CRYSTALS FOR ICOM, KLM, AND CUSH CRAFT
ALL STD CHANNELS IN STOCK
- MARCH SPECIAL - 8 45.5 x4*

WESTCOM

BOX 1020 ESCONDIDO, CALIFORNIA 92025

WE CARRY THE BEST STOCK OF ICOM, KLM, AND CUSH CRAFT
THE SAN DIEGO AREA. TRY US FIRST FOR THE BEST DEAL

MERIT ARNOLD
WG NLO

CAL HEISINGER
W6MNH

(714) 745-3901

BOARD OF DIRECTORS
SAN DIEGO REPEATER ASSOCIATION

President, Trustee 04/64	Ron Barrett	K6MZW	727-2621
Vice-President	Dave Fender	K6QL	223-8344
Secretary, Editor	Sybil Allbright	W6GIC	278-4284
Treasurer	Harvey Schow	W1ZIZ	234-5719
Membership, Trustee 16/76	Wayne Bamford	W6PDA	277-8320
Meeting Chairman	Mary Wilkerson	WA6IIF	443-6225
Public Service	Bill Hoyt	WB6DGR	273-2998
Members at Large	Dwight Cokain	WA6SIG	292-7983
	Paul Thompson	W6RS	582-6109

SQUELCH TALES is published by the SAN DIEGO REPEATER ASSOCIATION (SANDRA). The Association's mailing address is PO Box 5815m San Diego, CA 92105. SANDRA operates and maintains repeaters WR6ACF carrier squelch 16F3 (narrow band FM) 146.04 MHz input, 146.64 MHz output 100 watts ERP and WR6ACF carrier squelch 16F3 445.25 MHz input and 449.50 MHz output 60 watts ERP, WR6AJL carrier squelch 16F3 146.16 MHz input, 146.76 MHz output 100 watts ERP. WR6ACF is located on Mt. Otay, 12 miles east of Chula Vista and two miles North of the Mexican border. Antenna patterns are directed toward the City of Los Angeles. WR6AJL is located on Mt. Laguna east of San Diego and antenna patterns are toward the desert and San Diego.

SANDRA OPERATES A NET EACH SUNDAY EVENING AT 2000 hours PST on the 04/64 repeater system.

SQUELCH TALES is mailed monthly to members of the Association. Subscriptions are available to interested persons and organizations. News, views, and information exchanges (particularly newsletter exchanges) with other repeater groups are desired. SQUELCH TALES ads are \$15 per page, \$10 for a half page, and \$5 for a quarter page. Permission is granted to reprint items from this issue of SQUELCH TALES as long as editorial credit is given. Ads will be dropped after two months of non-payment.

STAFF FOR THIS ISSUE: Sybil Allbright, W6GIC, and Barbie Flinn, WA6URS. The Editor of SQUELCH TALES reserves the right to edit all material sent in for publication.

THE BOARD OF DIRECTORS OF THE SAN DIEGO REPEATER ASSOCIATION WISH TO THANK THE ADVERTISERS IN THIS ISSUE OF SQUELCH TALES FOR THEIR CONTINUED SUPPORT OF THE ASSOCIATION THROUGH THE DONATIONS THEY PROVIDE. IT IS HOPED THAT THE MEMBERSHIP WILL SHOW THEIR APPRECIATION BY MENTIONING THAT THEY SAW THE ADVERTISEMENT IN SQUELCH TALES.

OUR ADVERTISERS HAVE SUPPORTED THIS NEWSLETTER FOR OVER THREE YEARS. PATRONIZE THEM. THEY DESERVE IT.

SAN DIEGO COUNTY AMATEUR RADIO COUNCIL, INC.
SAN DIEGO REPEATER ASSOCIATION
POST OFFICE BOX 5815
SAN DIEGO, CALIFORNIA 92105

COMING EVENTS:

SANDRA BREAKFASTS: HAMBURGER HOUSE on
Clairmont Mesa at 9:00 AM. (On the second
Saturday, the breakfast is at Lyman's
Pancake House (Normal Heights Metho-
dist Church.)

Feb. 20: ANNUAL ELECTION MEETING.
4650 Mansfield, one block south of
Adams on Mansfield.

Feb. 15-16 FIRST ANNUAL DESERT W-HUNT.
Don't miss the Super-hunt put on by
the Escondido ARC. on 76

Feb. 22 Regular SANDRA T-Hunt starting
from Del Cerro at 7:30 PM. on 76

Feb. 27: SAN DIEGO COUNTY AMATEUR
RADIO COUNCIL meeting at Red Cross,
3650 Fifth Ave.

March 6: Board of Directors Meeting
at the Church.

NEW AMATEUR RADIO CLASSES:

EVENINGS:

Mon. at Midway, Advanced
Mon. & Wed. at Patrick Henry, Tech up
Mon. & Wed. at Hoover, Novice up
Tues. at Clairmont, Novice & General

DAYTIME

Lyman's class at the Church, all levels
Tues. and Thurs. 9:00 to 11:30 AM

BULK RATE
U. S. POSTAGE
PAID
SAN DIEGO, CALIF.
PERMIT NO. 1387